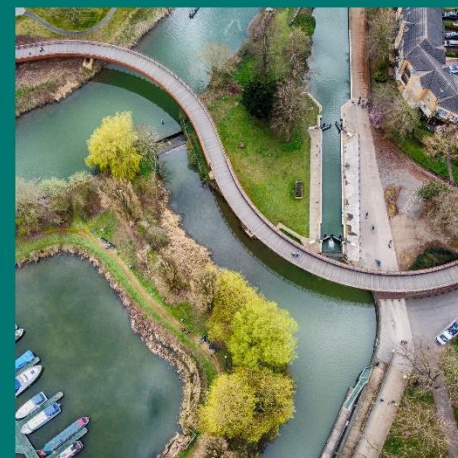


# Developing the ICP Outcomes Framework

WORKING DRAFT V4.1



# live your best life

Best Start in Life

Access to the best available education and learning

Opportunity to be fit, well and independent

Employment that keeps them and their families out of poverty

Housing that is affordable, safe, and sustainable in places which are clean and green

To feel safe in their homes and when out and about

Connected to their families and friends

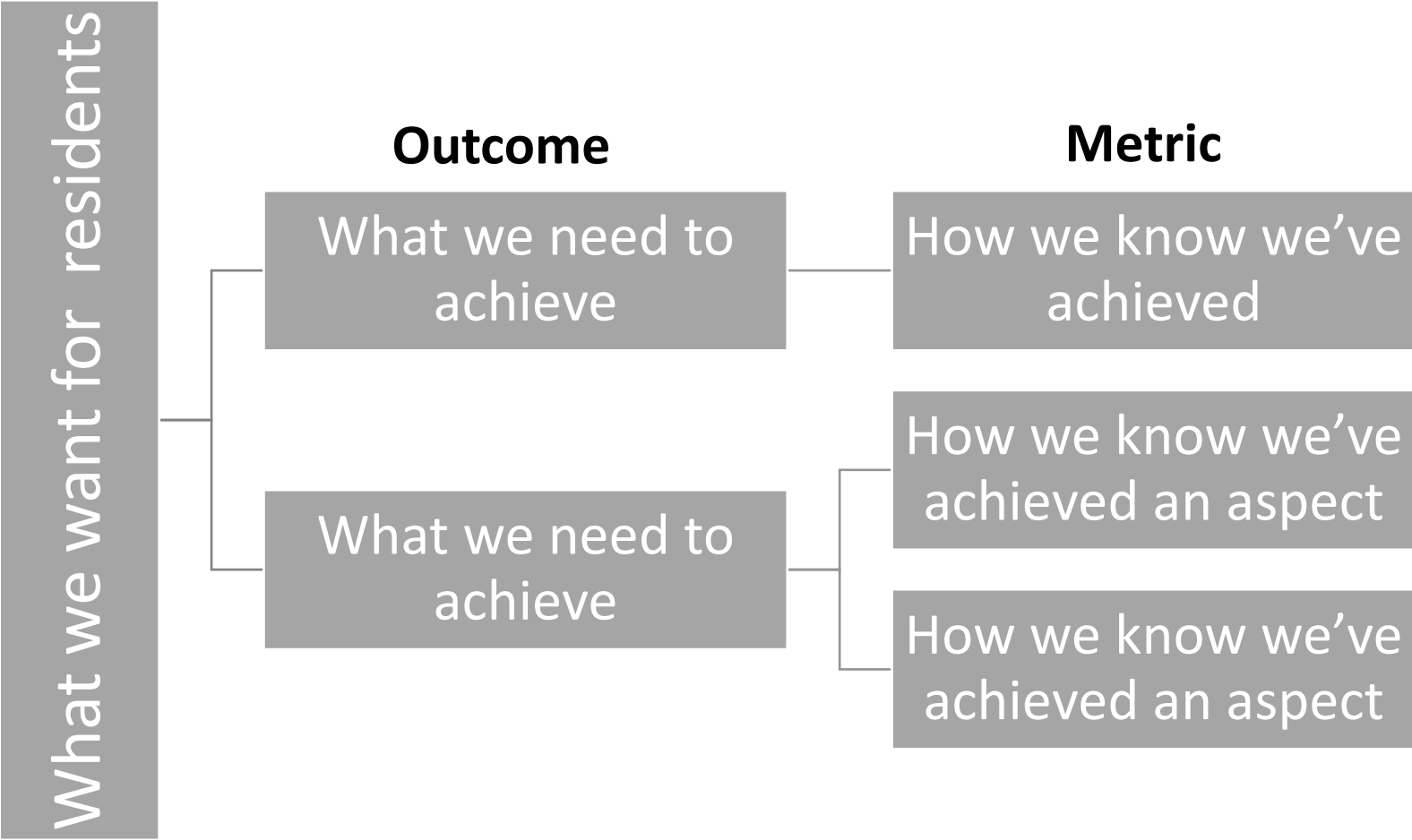
The chance for a fresh start when things go wrong

Access to health and social care when they need it

To be accepted and valued simply for who they are

# Framework Structure

## Ambition



# Planned Stakeholder Engagement

| ICB/NHS                                | WNC                           | NNC               | Other                     |
|--|-------------------------------|-------------------|---------------------------|
| Central Collaborative                  | Place                         | Place and Economy | NCT                       |
| CYP collab                             | People                        | Adults            | Northants Police          |
| MHLDA collab                           | Communities and Opportunities | Children's        | Northants Fire and Rescue |
| Elective care collab                   | Corporate                     | Transformation    | VCSE – via VIN, NCF       |
| iCAN collab                            | ELT                           | ELT               | Healthwatch               |
| ICB Delivery and Performance committee |                               |                   | University of Northampton |
| PHM board                              |                               |                   |                           |
| UHN – execs/NEDS                       |                               |                   |                           |
| NHFT – execs/NEDS                      |                               |                   |                           |

# Discussion Points

## 1. Wording of the ambition **outcomes**

- a) are the right outcomes – are we missing anything?
- b) language – have outcomes been articulated as they should?

## 2. **Metrics**

- a) If you've added any new outcomes – what would be the metric to measure them?
- b) If you could only have one metric per outcome what would it be?  
(what are the priority metrics and why?)
- c) Should there be any additional supporting metrics?

## 3. For each ambition, **who should own this?**

- a) Who are the leads in these areas?
- b) What are the boards/collaboratives/groups that hold this agenda?
- c) Are there existing strategies with their own outcomes framework we need to be aware of?

# Community Engagement

- Integrated Care Northamptonshire Community Engagement Framework has been agreed
  - Notes the importance of using insights already gathered.  
*“Create a ‘community insights report’ gathered from existing insights and involvement activity across Northamptonshire’s NHS provider and VCSFE organisations, local authorities and community groups. This will be used to inform our five year plans and key ICN strategies”*
- Conversations starting on how this is used to develop plans for “Place”
- Emerging “Asset Based Community Development” approach to place
  - ABCD project “Well Northants” feedback from communities is that they often provide feedback on priorities but want to see action.

# Ambition

## Best start in Life

### Outcome

Pregnant women have healthy lifestyles

Children are healthy from birth and develop well

Children are equipped to start school

Care settings are stable for children and young people

### Metric

% women obese in early pregnancy

% women smoking at time of delivery

% babies with low birth weight at term (<2.5kg)

Neonatal mortality and stillbirth rate (per 1000)

% breastfeeding at 6-8 weeks

% good level of development at end Yr R

% looked after children with three or more placements in the previous 12 months

% of re-referral to social care within 12 months of previous referral

Ambition

Best available education

Outcome

Metric

Children and young people perform well at all key stages

% all pupils achieving 9-4 pass in Eng & Maths

% LAC pupils achieving 9-4 pass in Eng & Maths

SEND education is accessible and meets the needs of children

Rate of SEND appeals

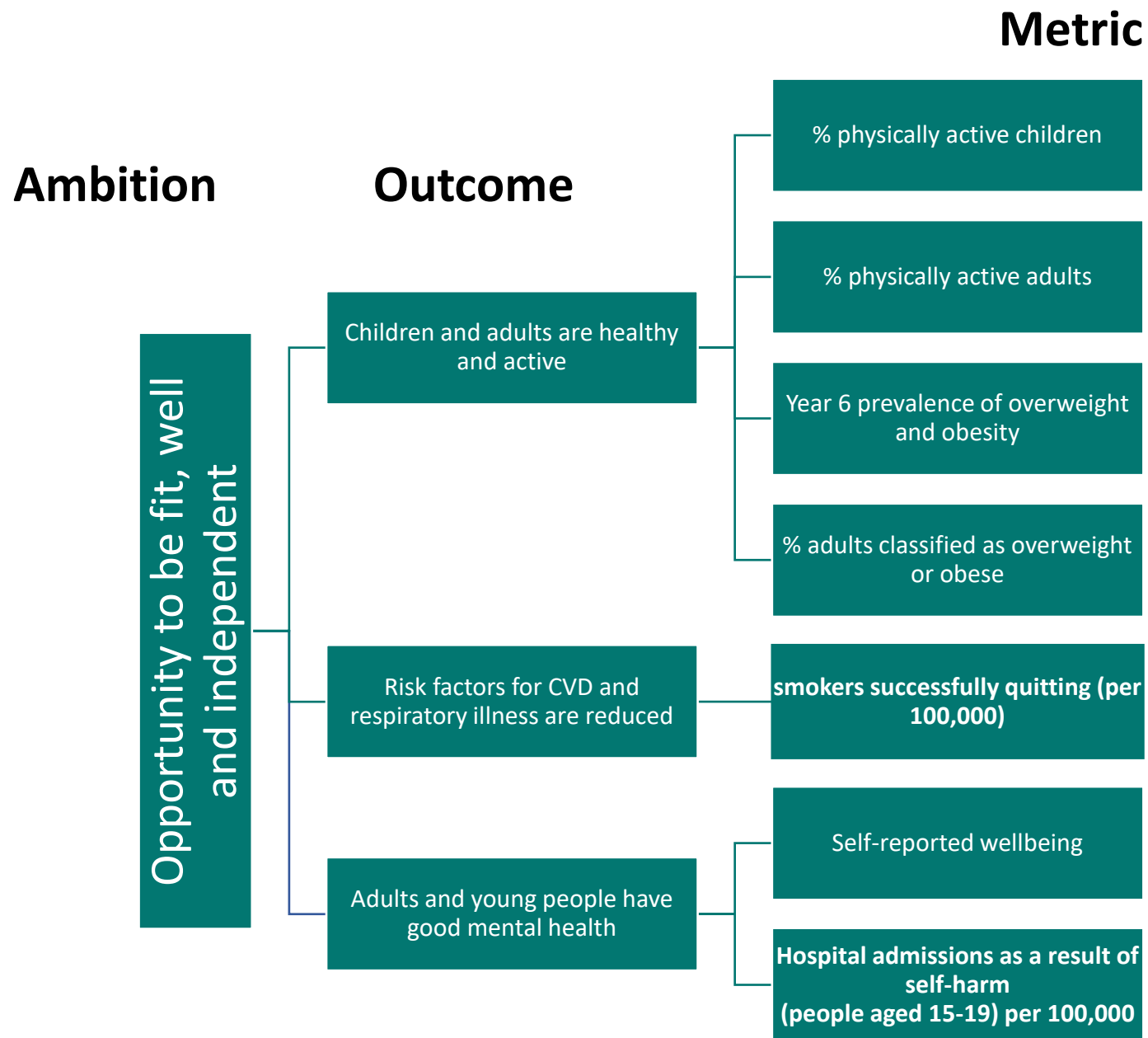
Schools are inclusive so that children and young people don't miss out on learning

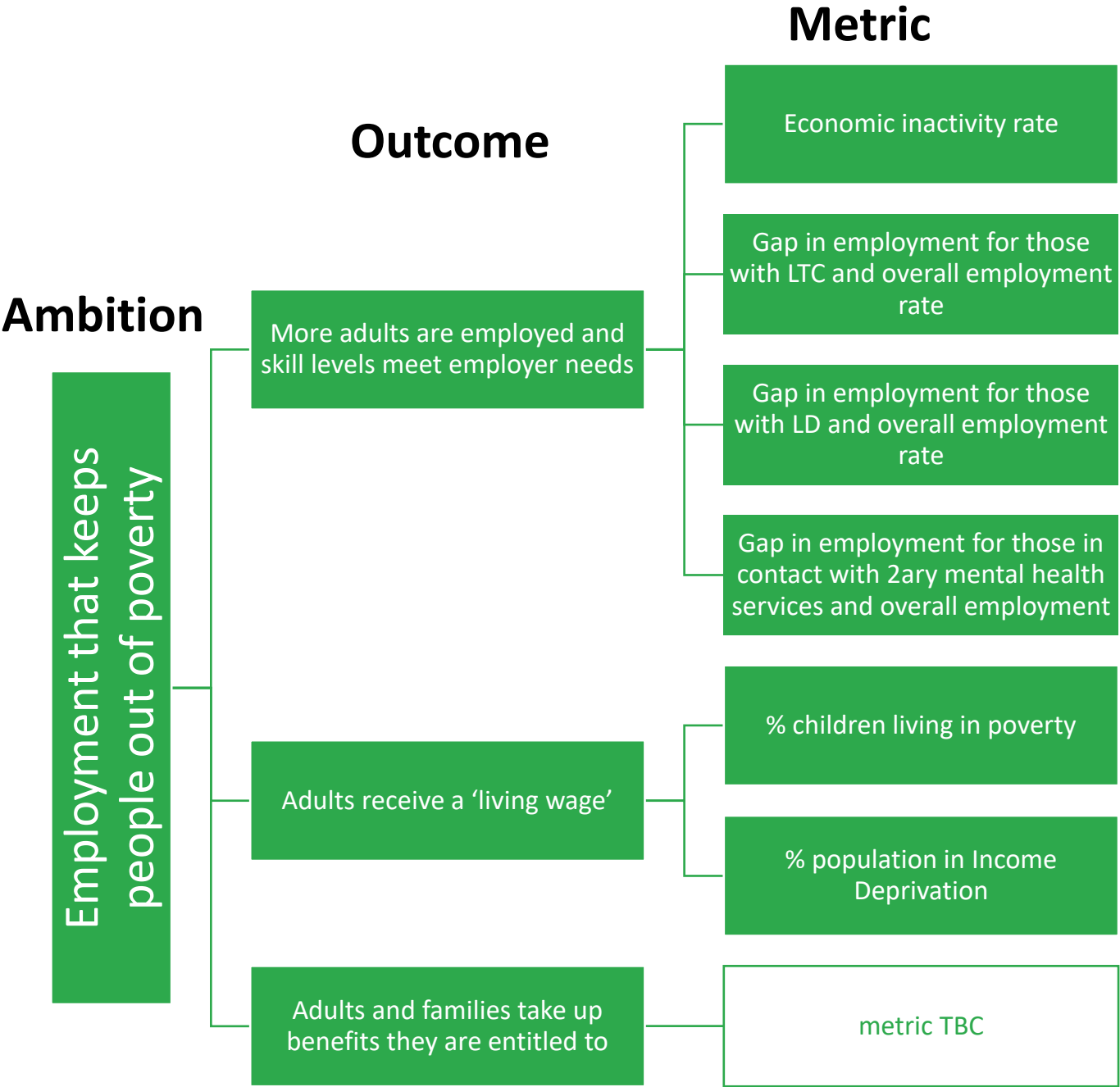
Number of fixed term/permanent exclusions and part time timetables

Adults have opportunities to learn that support them joining the workplace and new communities

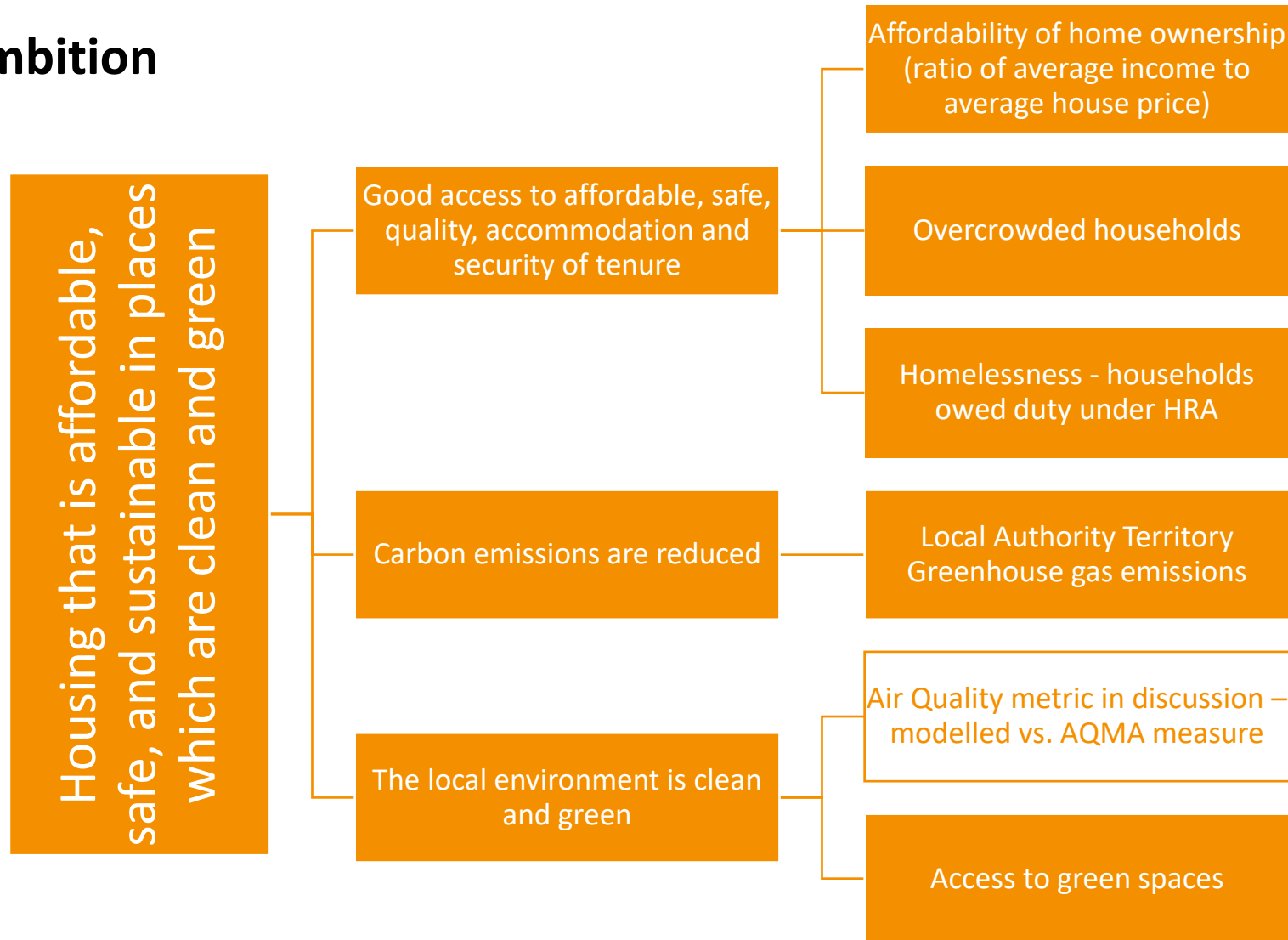
Metric TBC







## Ambition



## Ambition

To feel safe in their homes  
and when out and about

## Outcome

Residents are safe in their homes on public transport and in public places

Children and young people are safe and protected from harm

## Metric

Violent crime - violent offences per 1,000 population

Total of selected serious offences involving a knife

Domestic abuse – metric TBC

Children entering youth justice system

admissions caused by unintentional and deliberate injuries in young people (15-24) per 10,000

Children killed or seriously injured (KSI) on England's roads per 100,000

**Ambition**

**Outcome**

**Metric**

Connected to their families and friends

People feel well connected to family, friends and their community

Social isolation: percentage of adult social care users who have as much social contact as they would like

Public transport supports people to connect

Metric under discussion  
?concessionary travel claims

People are digitally included

Digital Exclusion Index

**Ambition**

The chance for a fresh start  
when things go wrong

**Outcome**

Ex offenders are supported back into civilian life

People have easy access to support for addictions and take it up

Rough sleeping rates are low

**Metric**

% offenders who re-offend

% adults with substance misuse treatment need who successfully engage in community-based structured treatment following release from prison

% of opiate and/or crack cocaine users not in treatment

Number of rough sleepers

# Ambition

# Outcome

# Metric

Access to health and social care when they need it

People have timely access to primary and elective care and mental health support

% waiting <6 weeks to enter IAPT treatment

% cancer TWW referral appt within 2 weeks

?ED wait times

Early cancer diagnosis

People have easy access to health checks and screening services and take it up

% eligible adults with LD received LD health check

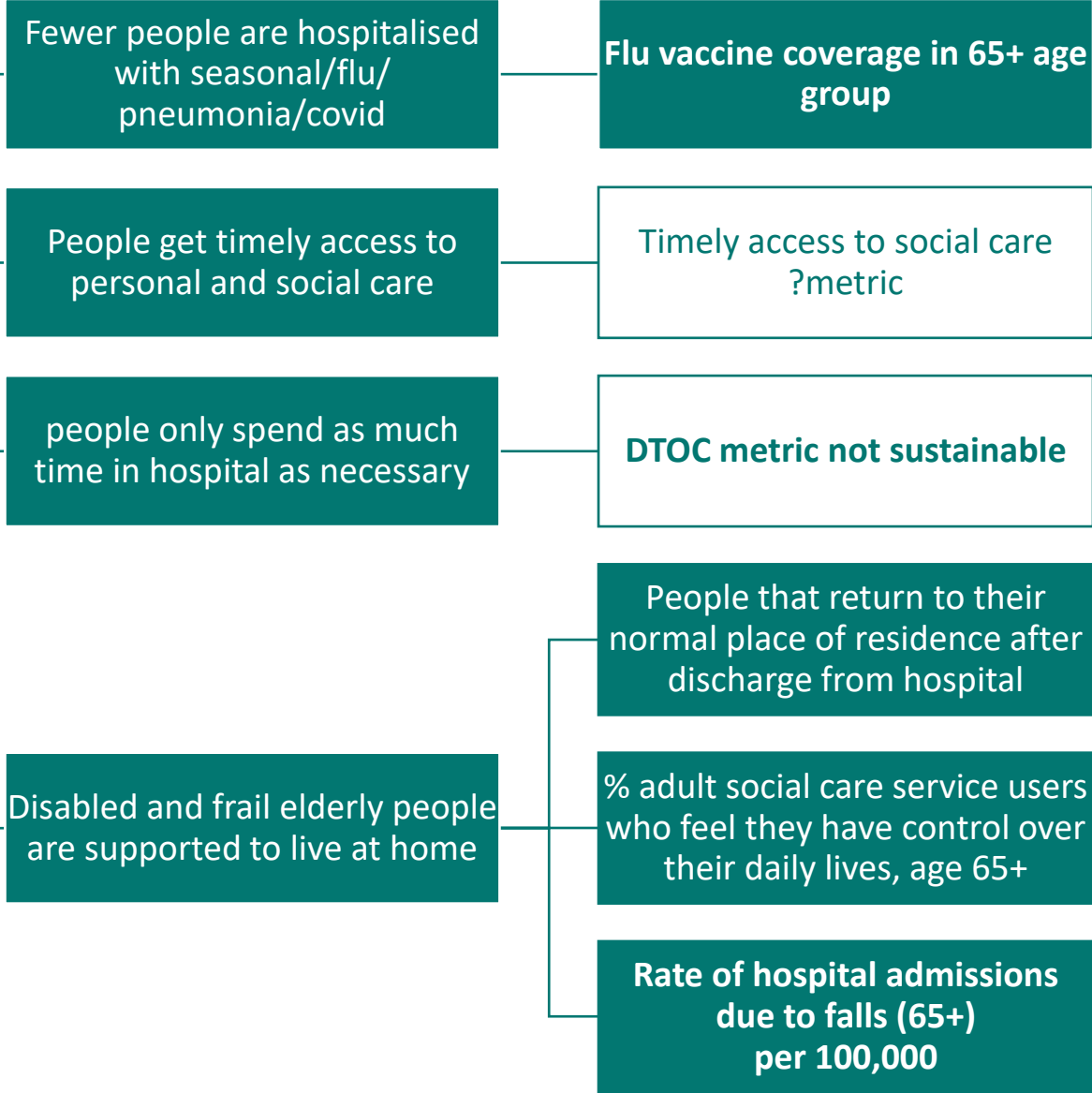
% eligible adults received health check

# Ambition

# Outcome

# Metric

Access to health and social care when they need it





**Ambition**

People are accepted and valued simply for who they are

**Outcome**

Older people, those with care needs and those at end of life are treated with dignity and respect

People are a valued part of their community and not socially isolated

Northamptonshire respects and celebrates diversity and people feel valued

**Metric**

Community cohesion metrics – hate crime